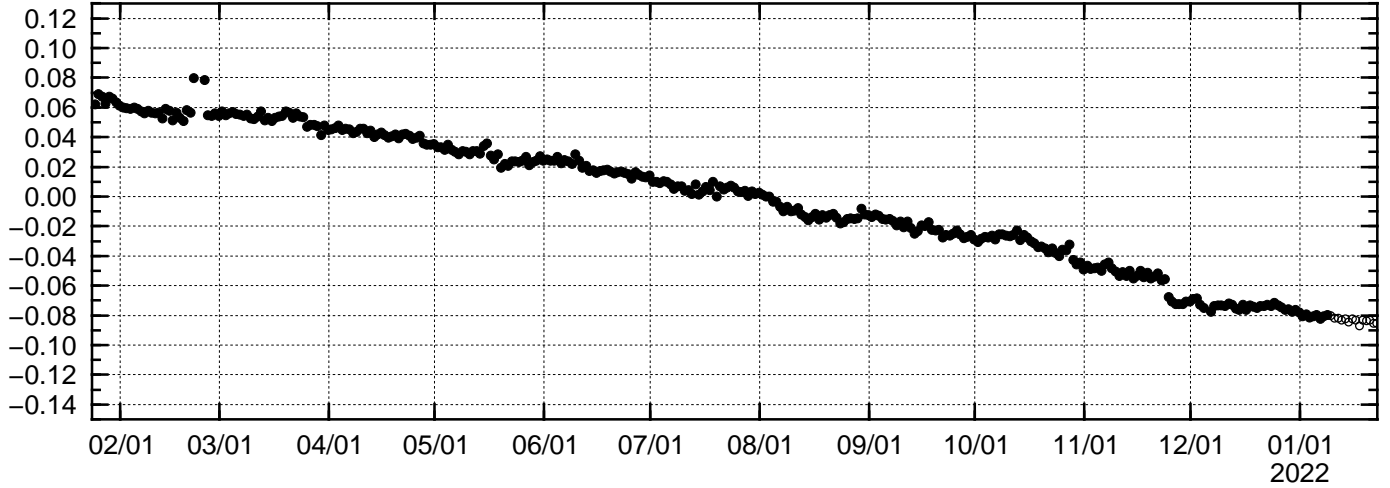


基線変化グラフ

期間: 2021/01/24-2022/01/22 JST

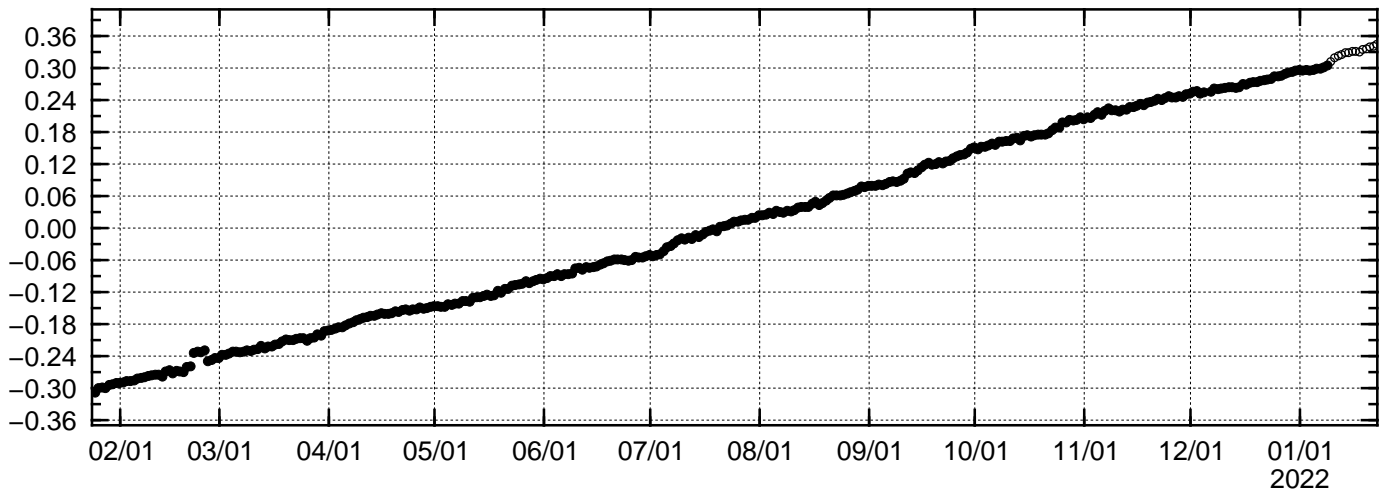
(m) (1) 父島 A (052007) → 硫黄島 1 (960604) 斜距離

基準値: 270584.851m



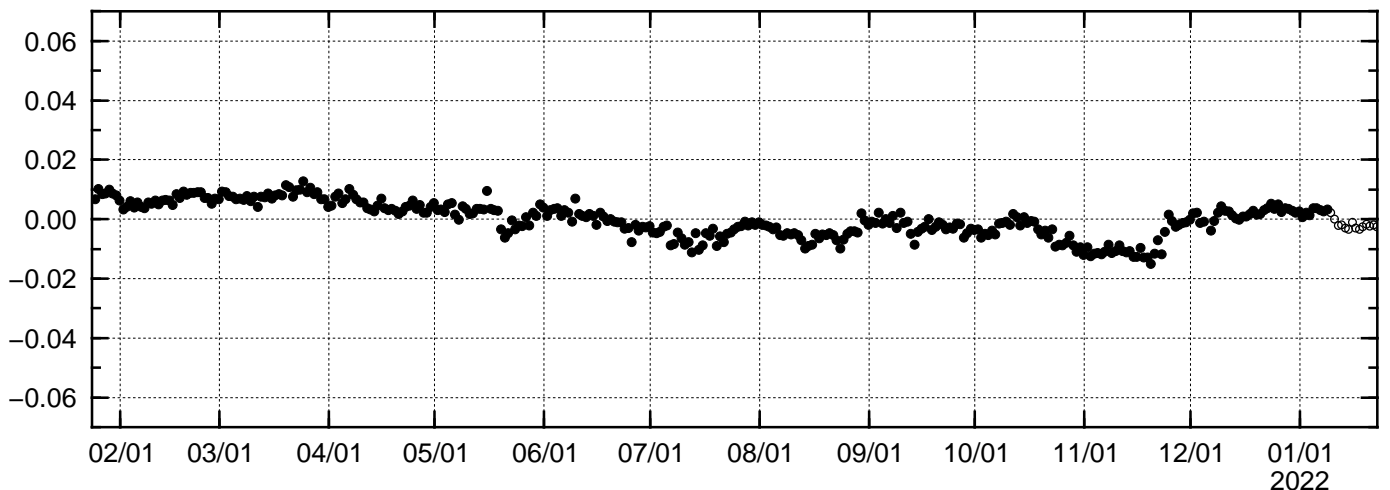
(m) (2) 父島 A (052007) → 硫黄島 2 (960605) 斜距離

基準値: 274824.697m



(m) (3) 父島 A (052007) → M硫黄島 A (149086) 斜距離

基準値: 271327.987m



● --- [F3:最終解] ○ --- [R3:速報解]

国土地理院